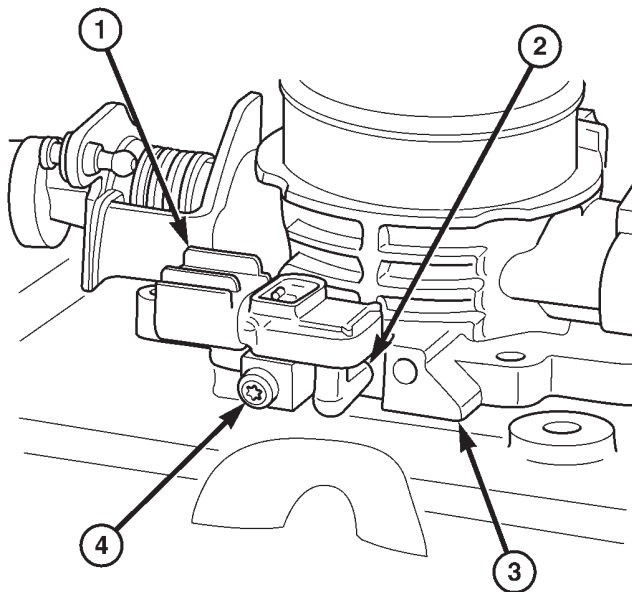


**MAP SENSOR (Continued)**

The PCM recognizes a decrease in manifold pressure by monitoring a decrease in voltage from the reading stored in the barometric pressure memory cell. The MAP sensor is a linear sensor; meaning as pressure changes, voltage changes proportionately. The range of voltage output from the sensor is usually between 4.6 volts at sea level to as low as 0.3 volts at 26 in. of Hg. Barometric pressure is the pressure exerted by the atmosphere upon an object. At sea level on a standard day, no storm, barometric pressure is approximately 29.92 in Hg. For every 100 feet of altitude, barometric pressure drops .10 in. Hg. If a storm goes through it can change barometric pressure from what should be present for that altitude. You should know what the average pressure and corresponding barometric pressure is for your area.

**REMOVAL****REMOVAL - 4.0L**

The MAP sensor is mounted to the side of the throttle body (Fig. 16). An L-shaped rubber fitting is used to connect the MAP sensor to throttle body (Fig. 16).



8105d0ba

**Fig. 16 4.0L MAP SENSOR MOUNTING**

- 1 - MAP SENSOR
- 2 - RUBBER FITTING
- 3 - THROTTLE BODY
- 4 - MOUNTING SCREW (1)

(1) Remove air cleaner duct and air resonator box at throttle body.

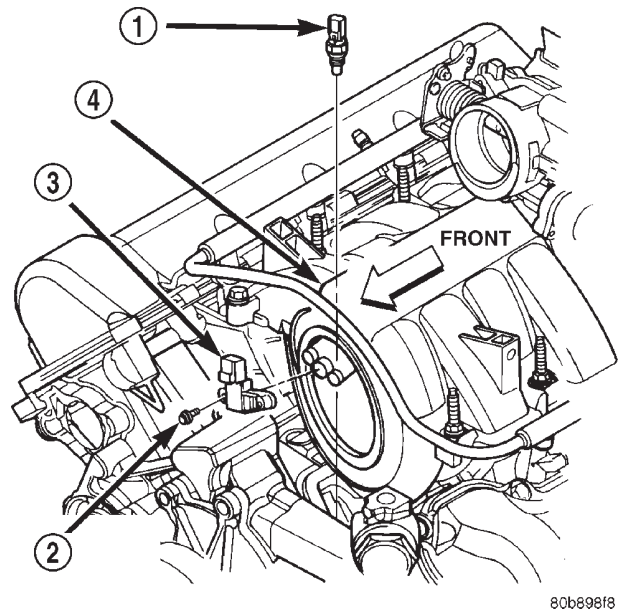
(2) Remove MAP sensor mounting bolt (screw) (Fig. 16).

(3) While removing MAP sensor, slide the rubber L-shaped fitting (Fig. 16) from the throttle body.

(4) Remove rubber L-shaped fitting from MAP sensor.

**REMOVAL - 4.7L**

The MAP sensor is located on the front of the intake manifold (Fig. 17). An o-ring seals the sensor to the intake manifold.



80b898f8

**Fig. 17 MAP and ECT Sensor Locations—4.7L V-8 Engine**

- 1 - ECT SENSOR
- 2 - MOUNTING BOLTS (2)
- 3 - MAP SENSOR
- 4 - INTAKE MANIFOLD

- (1) Disconnect electrical connector at sensor.
- (2) Clean area around MAP sensor.
- (3) Remove 2 sensor mounting bolts (Fig. 17).
- (4) Remove MAP sensor from intake manifold.